

Freidoras eléctricas
Electric fryers
Friteuse électrique
Elektro fritteusen
Friggitrici elettriche
Fritadeiras elétricas

GAMA SNACK

Modelos:

FE6-05 TE

FE6-10 TE

Архангельск (8182)63-90-72
Астана (7172)727-132
Астрахань (8512)99-46-04
Барнаул (3852)73-04-60
Белгород (4722)40-23-64
Брянск (4832)59-03-52
Владивосток (423)249-28-31
Волгоград (844)278-03-48
Вологда (8172)26-41-59
Воронеж (473)204-51-73
Екатеринбург (343)384-55-89
Иваново (4932)77-34-06

Ижевск (3412)26-03-58
Иркутск (395)279-98-46
Казань (843)206-01-48
Калининград (4012)72-03-81
Калуга (4842)92-23-67
Кемерово (3842)65-04-62
Киров (8332)68-02-04
Краснодар (861)203-40-90
Красноярск (391)204-63-61
Курск (4712)77-13-04
Липецк (4742)52-20-81

Магнитогорск (3519)55-03-13
Москва (495)268-04-70
Мурманск (8152)59-64-93
Набережные Челны (8552)20-53-41
Нижний Новгород (831)429-08-12
Новокузнецк (3843)20-46-81
Новосибирск (383)227-86-73
Омск (3812)21-46-40
Орел (4862)44-53-42
Оренбург (3532)37-68-04
Пенза (8412)22-31-16

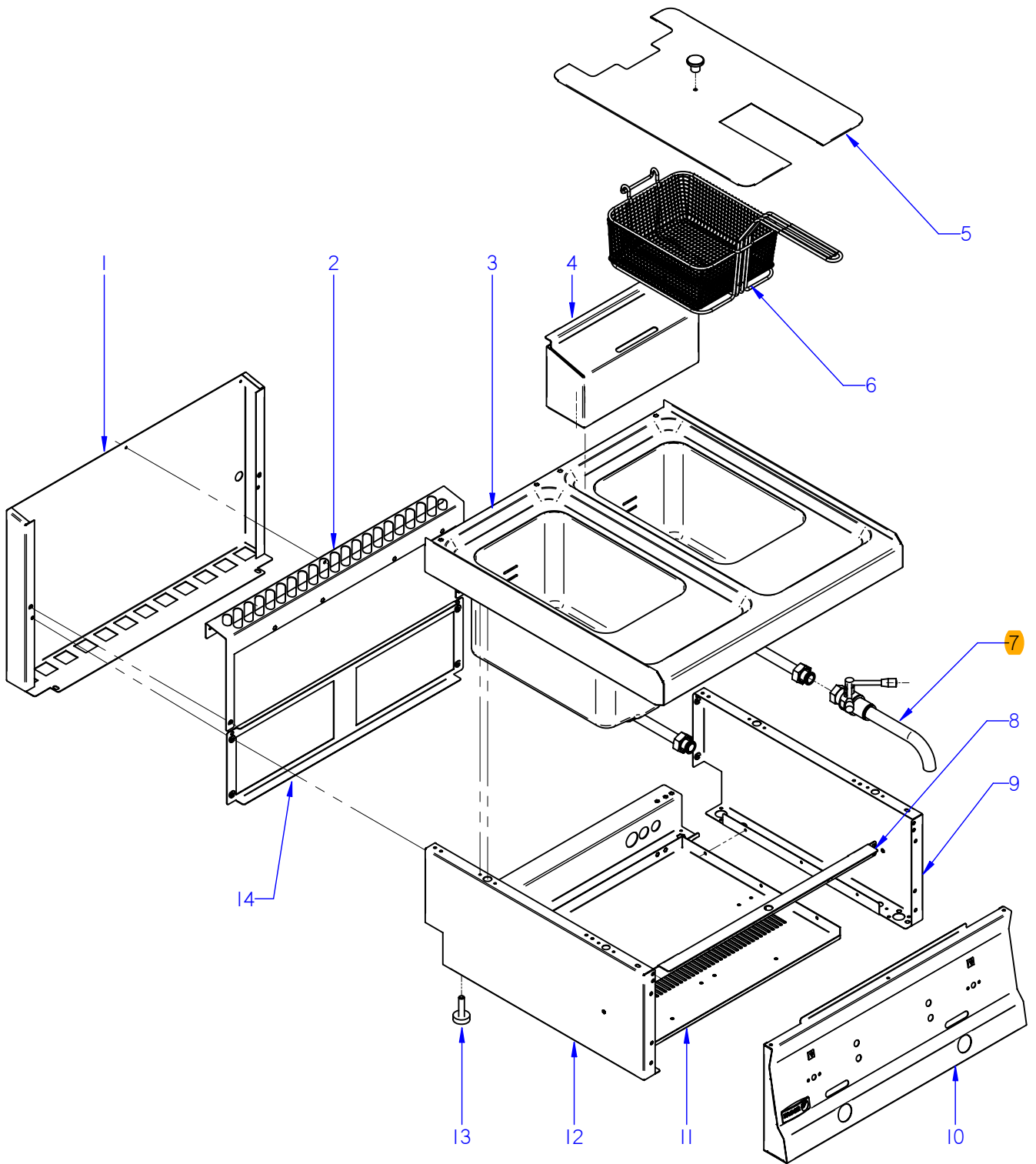
Пермь (342)205-81-47
Ростов-на-Дону (863)308-18-15
Рязань (4912)46-61-64
Самара (846)206-03-16
Санкт-Петербург (812)309-46-40
Саратов (845)249-38-78
Севастополь (8692)22-31-93
Симферополь (3652)67-13-56
Смоленск (4812)29-41-54
Сочи (862)225-72-31
Ставрополь (8652)20-65-13

Сургут (3462)77-98-35
Тверь (4822)63-31-35
Томск (3822)98-41-53
Тула (4872)74-02-29
Тюмень (3452)66-21-18
Ульяновск (8422)24-23-59
Уфа (347)229-48-12
Хабаровск (4212)92-98-04
Челябинск (351)202-03-61
Череповец (8202)49-02-64
Ярославль (4852)69-52-93

Киргизия (996)312-96-26-47

Россия (495)268-04-70

Казахстан (772)734-952-31



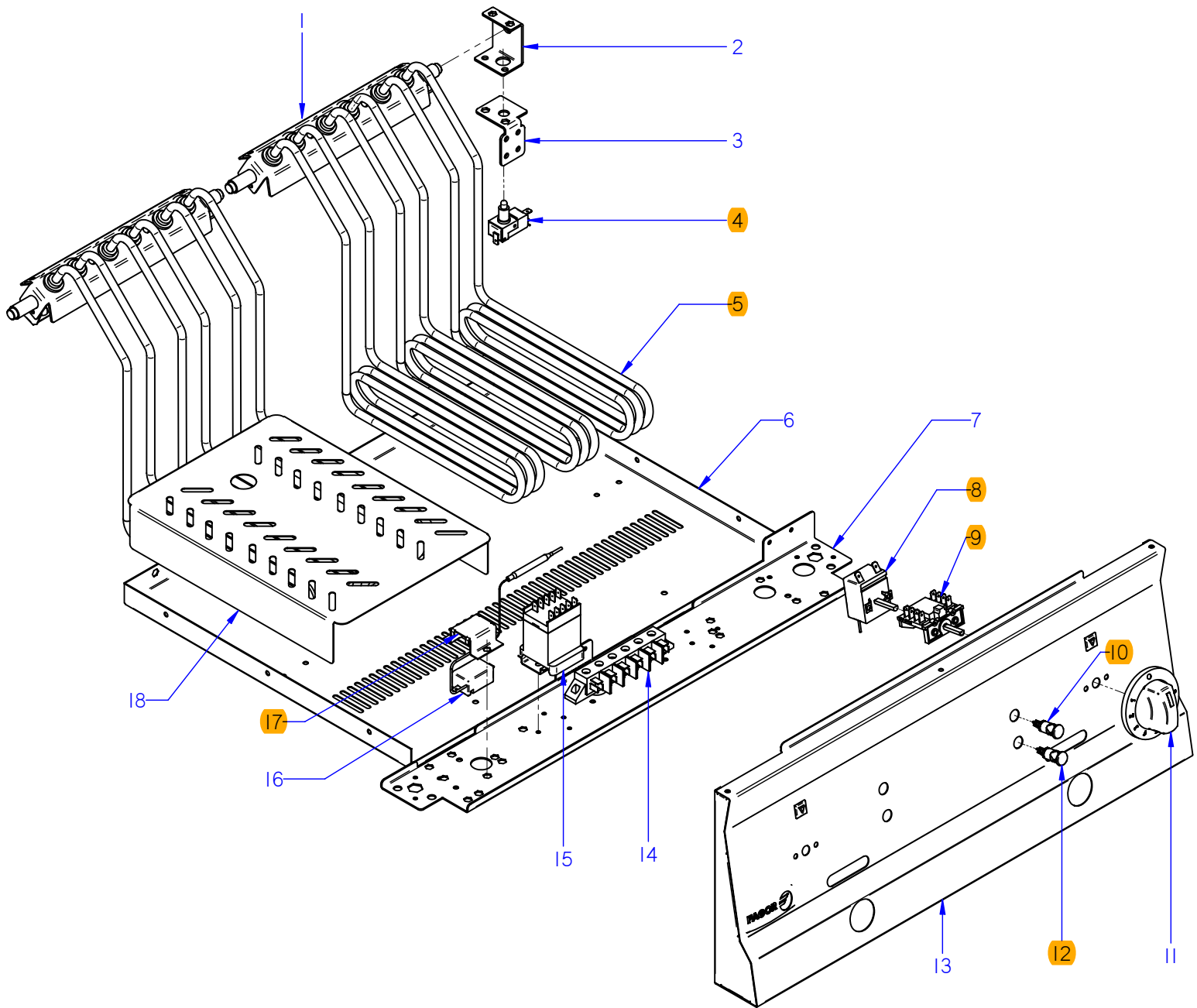
ITEM MARCADO EN COLOR = REPUESTO RECOMENDADO
 COLOURED ITEM = RECOMMENDED SPARE PART

N plano	Firma	Fecha	Aparato	MUEBLE	Lamina	Fagor Industrial S.Coop. FAGOR
C-2640	<i>(Signature)</i>	2010-05	FREIDORAS FE4-10TE / FE6-10TE		1	Oñate

MOD.		FREIDORAS / FRYERS		ZONA	MUEBLE / UNIT					PLANO	C-2640
ITEM	CODIGO	DENOMINACION	TEXTO	FE6-05 TE	FE6-10 TE						NOTAS
1	J142815000	PROTECC. CHIMENEA POST. 400	PROTECTION CHIMEMEY POS.	1							
S/Nº	J142627000	BASE PROTECTOR CHIMEN. 400	PROTEC. CHIMEMEY BASE 400	1							
1	J142816000	PROTECC. CHIMENEA POST. 600	PROTECTION CHIMEMEY POS.		1						
S/Nº	J142628000	BASE PROTECTOR CHIMEN. 600	PROTEC. CHIMEMEY BASE 600		1						
	Q419005000	REMACHE 4X8 ALMG3 / ALUMINIO	RIVET 4X8 ALMG3 / ALUMINIUM	2	2						
2	J152811000	PROTECCION CHIMENEA ANT.605	PROTECTION CHIMENEY ANT	1							
2	J152817000	PROTECCION CHIMENEA ANT.610	PROTECTION CHIMENEY ANT		1						
	Q221342000	REMACHE EXAGONAL M5	HEXAGONAL RIVET M5	3	3						
3	J155414000	CUBA COMPLETA FE6-05	CUBE FE6-05 COMPL.	1							ELIMINADA 05.07.2010
3	J155420000	CUBA COMPL.FE6-05 C/DESAGÜE	CUBE FE6-05 COMPL.C/DRAIN	1							INTRODUC. 05.07.2010
3	J155416000	CUBA COMPLETA FE6-10	CUBE FE6-10 COMPL.		1						ELIMINADA 05.07.2010
3	J155422000	CUBA COMPL. FE6-10 C/DESAGÜE	CUBE FE6-10 COMPL.C/DRAIN		1						INTRODUC. 05.07.2010
	Q221342000	REMACHE EXAGONAL M5	HEXAGONAL RIVET M5	12	12						
	Z442919000	PITON CIERRE	LOCK SPIKE	4	4						
4	J152818000	SOP. CESTILLO FREIDORA FE6-10	SOPORT BASKETS FRYERS	1	2						
	Z442918000	CLIP CIERRE	LOCK SPRING	2	4						
5	J155409000	TAPA FREIDORA SNACK FE6-05	COVER SNACK FE6-05 FRYER	1							INTRODUC. 01.02.2011
5	J155423000	TAPA FREIDORA SNACK FE6-10	COVER SNACK FE6-10 FRYER		2						INTRODUC. 01.02.2011
S/Nº	X166154000	POMO PARA TAPA	KNOB FOR COVER	1	2						INTRODUC. 01.02.2011
6	J156501000	CESTILLO FREIDORA SNACK	CESTILLO FRIERS SNACK	1	2						
7	J182102000	VÁLVULA PARA ACEITE	VALVE FOR OIL	1	2						ELIMINADA 01.07.2010
	J142110000	TOPE VALVULA	VALVE LIMIT	1	2						ELIMINADA 01.07.2010
7	J182108000	VÁLVULA DRENAJE CON TOPE	DRAIN VALVE WITH STOP	1	2						INTRODUC. 01.07.2010
	J182109000	CUERPO VÁLVULA DRENAJE	BODY DRAIN VALVE WITH STOP	1	2						INTRODUC. 01.07.2010
	J182104000	TUBO DRENAJE	DRAIN TUBE	1	2						INTRODUC. 01.07.2010
	J142106000	MANGUITO CONEXION GRIFO VAC.	MANGUITO CONEXION GRIFO VA	1	2						
	J142111000	JUNTA GRIFO VACIADO	JUNTA GRIFO VACIADO SNACK	1	2						

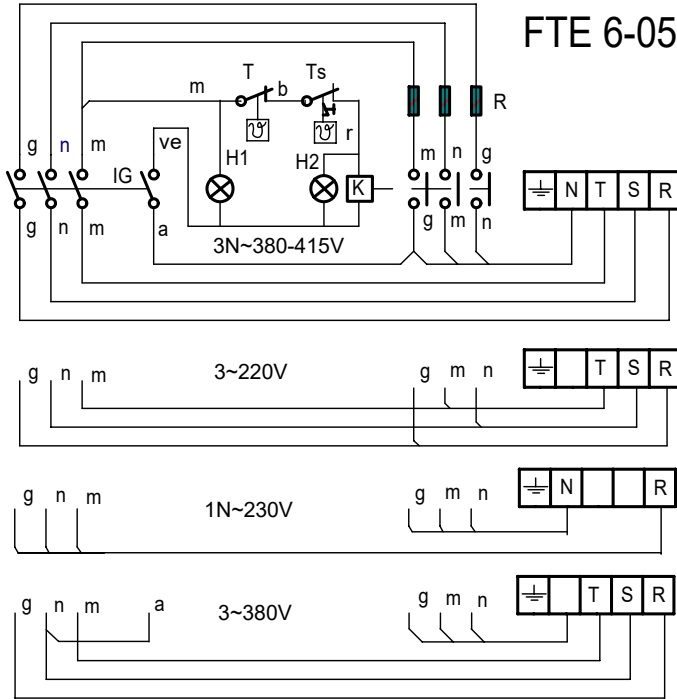
MOD.		FREIDORAS / FRYERS		ZONA	MUEBLE / UNIT					PLANO	C-2640
ITEM	CODIGO	DENOMINACION	TEXTO	FE6-05 TE	FE6-10 TE						NOTAS
8	J142621000	GUÍA PANEL PORTAMANDOS 400	GUIDE PANEL OF CONTROLS	1	1						ELIMINADA 01.09.2010
8	J002610000	GUÍA PANEL PORTAMANDOS 400	400 GUIDE PANEL OF CONTROL	1	1						INTRODUC. 01.09.2010
8	J142624000	GUÍA PANEL PORTAMANDOS 600	GUIDE PANEL OF CONTROLS	1	1						ELIMINADA 01.09.2010
8	J002612000	GUÍA PANEL PORTAMANDOS 600	GUIDE PANEL OF CONTROLS	1	1						INTRODUC. 01.09.2010
8	J142624000	GUÍA PANEL PORTAMANDOS 600	GUIDE PANEL OF CONTROLS	1	1						
	Q221342000	REMACHE EXAGONAL M5	HEXAGONAL RIVET M5	4	4						
	Q012031000	TORNILLO EXAGONAL M5x10 A304	HEXAGONAL BOLT M5x10 A304	4	4						
9	J002834000	PANEL LATERAL DERECHO	RIGHT SIDE PANEL	1	1						
	Q221342000	REMACHE EXAGONAL M5	HEXAGONAL RIVET M5	1	1						
	Q419007000	REMACHE TUBULAR C/V D3.2X6	TUBULAR RIVET C/V D3.2X6	8	8						
	Z442918000	CLIP CIERRE	LOCK SPRING	4	4						
10	J152802000	PORTAMANDOS COMPL. FE6-05	CONTROL HOLDER FE6-05	1	1						
10	J152804000	PORTAMANDOS COMPL. FE6-10	CONTROL HOLDER FE6-10	1	1						
	U022836000	ESCUDO FAGOR	FAGOR EMBLEM	1	1						
	Q221023000	CLIP SUJECIÓN RÁPIDA Ø5	RAPID CONNECT CLIP Ø5	2	2						
11	J002604000	BASE INFERIOR FE6-05	LOWER BASE FE6-05	1	1						
11	J002607000	BASE INFERIOR FE6-10	LOWER BASE FE6-10	1	1						
	Q419005000	REMACHE 4X8 ALMG3 / ALUMINIO	RIVET 4X8 ALMG3 / ALUMINIUM	6	6						
	Q221342000	REMACHE EXAGONAL M5	HEXAGONAL RIVET M5	2	2						
12	J002833000	PANEL LATERAL IZQUIERDO	LEFT SIDE PANEL	1	1						
	Q221342000	REMACHE EXAGONAL M5	HEXAGONAL RIVET M5	1	1						
	Q419007000	REMACHE TUBULAR C/V D3.2X6	TUBULAR RIVET C/V D3.2X6	8	8						
	Z442918000	CLIP CIERRE	LOCK SPRING	4	4						
13	Z200107000	PATA REGULABLE	ADJUSTABLE LEG	4	4						
14	J142806000	PANEL POSTERIOR FG6-05	REAR PANEL FRYERS FG6-05	1	1						
14	J142807000	PANEL POSTERIOR FG6-10	REAR PANEL FRYERS FG6-10	1	1						
	Q419005000	REMACHE 4x8 ALMG3 / ALUMINIO	RIVET 4X8 ALMG3 / ALUMINIUM	4	4						

ITEM MARCADO EN COLOR = REPUESTO RECOMENDADO
 COLOURED ITEM = RECOMMENDED SPARE PART



MOD.		FREIDORAS / FRYERS		ZONA		CONJUNTO FUNCIONAL / FUNCTIONAL UNIT				PLANO		C-2641	
ITEM	CODIGO	DENOMINACION	TEXTO	FE6-05 TE	FE6-10 TE							NOTAS	
1	J152603000	GIRO RESISTENCIAS COMPLETO	COMPL. RESISTOR ROTATION	1	2								
2	J152609000	SOP. EJE RESISTENCIA FE SNAK	RESISTOR SUPPORT	2	4								
3	J152610000	SOPORTE GIRO RESISTENCIAS D.	RESISTOR ROTATION SUPPORT	1	2								
4	X343015000	MICRORUPTOR Cod. 32280001	MICRORUPTOR	1	2								
S/Nº	J152614000	TOPE MICRO	MICRO STOP	1	2								INTRODUCIDO 01.06.2010
5	J153016000	RESISTENCIA 2000W(230V)SNACK	RESISTOR 2000W(230V)SNACK	3	6								
S/Nº	J152616000	GUIA CENTRAL RESISTENCIAS	CENTRAL RESISTANCE GUIDE	1	2								INTRODUCIDO 28.04.2011
6	J002604000	BASE INFERIOR FE6-05	LOWER BASE FE6-05	1									
6	J002607000	BASE INFERIOR FE6-10	LOWER BASE FE6-10		1								
7	J142601000	FRONTAL SUPERIOR FE6-05	FRONT SUPPORT FE6-05	1									
7	J142602000	FRONTAL SUPERIOR FE6-10	FRONT SUPPORT FE6-10		1								
8	X033000000	TERMOSTATO 60-200C	THERMOSTAT	1	2								
9	X163007000	CONMUTADOR ACOPLE TERMOS.	THERMOSTAT CONNECT SWITC	1	2								
	Q151320000	TORNILLO ALOMADO M4x6 H,ZINC.	CURVED SCREW M4x6 H,ZINC.	2	2								
10	R693055000	PILOTO VERDE 41227000C7	GREEN PILOT 41227000C7	1	2								
11	X482101000	BOTON DE MANDO Ø6 FE-700	CONTROL BUTTON Ø6 FE-700	1	2								
12	R693056000	PILOTO AMBAR	AMBAR PILOT	1	2								
13	J152802000	PORTAMANDOS COMPL. FE6-05	CONTROL HOLDER FE6-05	1									
13	J152804000	PORTAMANDOS COMPL. FE6-10	CONTROL HOLDER FE6-10		1								
14	R253044000	REGLETA AUXILIAR FV-122	AUXILIARY TERMINAL STRIP FV-	1	2								
	Q152004000	TORNIL. APLASTADO M5X13 A 304	FLAT HEADED SCREW M5x13 A 3	2	4								
15	Z213007000	CONTACTOR 230 V. 50-60 HZ	CONTACTOR 230 V. 50-60 HZ	1	2								
	Z123018000	GUIA CONTACTOR L-55	CONTACTOR GUIDE L-55	1	2								
	Q419005000	REMACHE 4X8 ALMG3 / ALUMINIO	RIVET 4X8 ALMG3 / ALUMINIUM	2	4								
16	X033001000	TERMOSTATO SEGURIDAD	THERMOSTAT	1	2								
17	X353007000	SOPORTE TERMOSTATO SEG.	THERMOSTAT SUPPORT	1	2								
18	J156105000	PANEL SEPARADOR FREIDORAS	FRYER DIVIDER PANEL	1	2								


FTE 6-05, FTE 6-10, FE 6-05, CMF 6-05

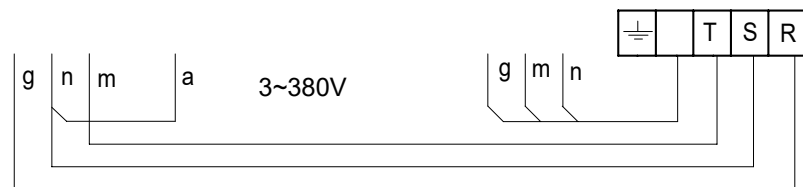
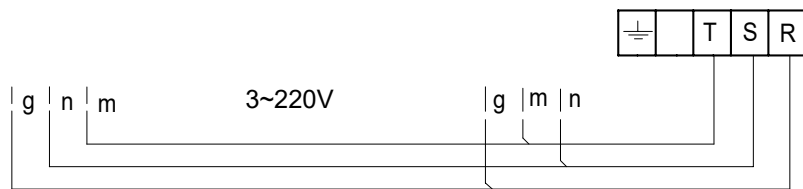
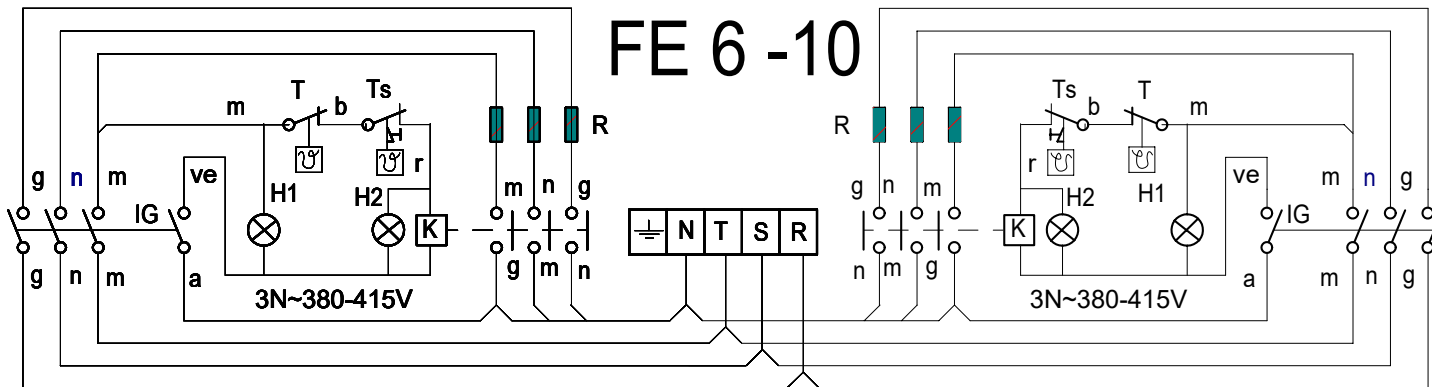


IG : Interruptor general / Main switch
H1 : Lámpara funcionamiento / Operating lamp
H2 : Lámpara calentamiento / Heating Lamp
K : Contactor de calentamiento / heating contactor
R : Resistencia de Calentamiento / Resistance heating
T : Termostato / thermostat
Ts : Termostato de seguridad / Hi-limit thermostat

r = rojo / red
 m = marron / brown
 g = gris / grey
 n = negro / black
 a = azul / blue
 b = blanco / white
 am/ve = amarillo-verde / Yellow-green

J153003000

-	Theoretical diagram:FE 605, FTE 605, FTE 610, CMF 605			J153003000	
Zk./Nº	Pieza	Cant.	Materiala/Material	Klas. zk/Nº Clas.	Gainazal akabera/Tratamiento
Zk./Nº	Aldaketa/Modificaciones		Nork proposatua/Propuesta de	Data/Fecha	Perdoi orokorrak Tolerancias generales
-	-	-	-	-	< 5 ± 0.2 50 ÷ 100 ± 0.8
-	-	-	-	-	5 ÷ 25 ± 0.4 >100± 1
-	-	-	-	-	25 ÷ 50 ± 0.6 α ± 1°
-	-	-	-	-	-
Marratzua/Dibujado	Sinadura/Firma	Data/Fecha	 Fagor Industrial,Koop.Elk, Mugatua		Gainazal perdoia Mecanizado superficial
Proiektatua/Proyectado	e.carrascal	2008-10-23			-
Egiaztatua/Comprobado	J.Alberdi	2008-10-23			-
Eskala/Escala	COOKING				Plano Zk./Plano Nº HB-80489
	Plano hau ezin daiteke erabili, ez berriztatu, gure baimenik gabe.				- Zk. ord. du
					- Zk.gaitik ord.



r = rojo / red
 m = marron / brown
 g = gris / grey
 n = negro / black
 a = azul / blue
 b = blanco / white
 am/ve = amarillo-verde / Yellow-green

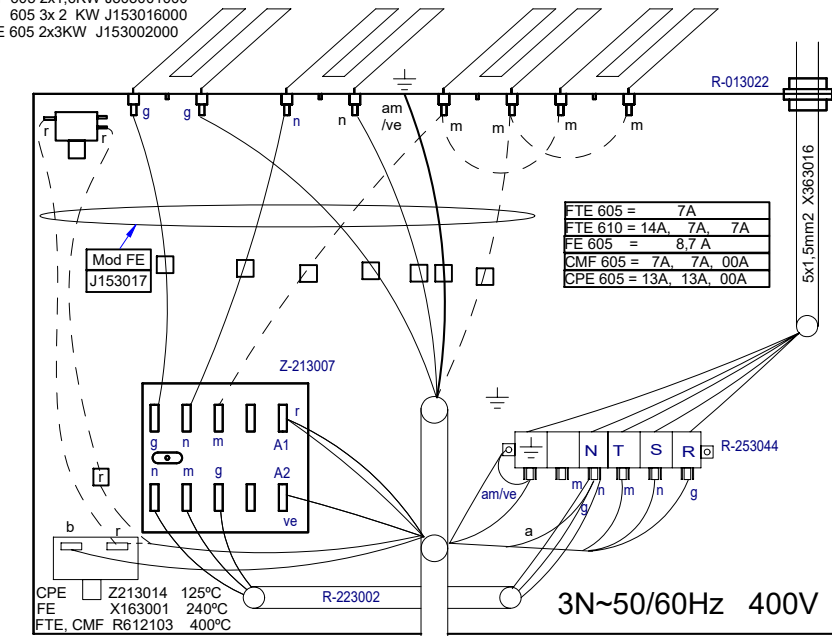
J153004000

- IG** : Interruptor general / Main switch
- H1** : Lámpara funcionamiento / Operating lamp
- H2** : Lámpara calentamiento / Heating Lamp
- K** : Contactor de calentamiento / heating contactor
- R** : Resistencia de Calentamiento / Resistance heating
- T** : Termostato / thermostat
- Ts** : Termostato de seguridad / Hi-limit thermostat

Theoretical diagram: FE610			J153004000			
Zk./Nº	Pieza	Cant.	Materiala/Material	Klas. zk/Nº Clas.	Gainazal akabera/Tratamiento	
Zk./Nº	Aldaketa/Modificaciones		Nork proposatua/Propuesta de	Data/Fecha	Perdoi orokorrak Tolerancias generales	
-	-		-	-	< 5 ± 0.2	50 ± 100 ± 0.8
-	-		-	-	5 ± 25 ± 0.4	> 100 ± 1
-	-		-	-	25 ± 50 ± 0.6	α ± 1
-	-		-	-	-	-
Sinadura/Firma		Data/Fecha	FAGOR Fagor Industrial, Koop. Elk. Mugatua		Gainazal perdoia Mecanizado superficial	
Marraztua/Dibujado		e.carrascal 2008-10-23				
Proiektatua/Proyectado		e.carrascal 2008-10-23				
Egiatzatua/Comprobado		I. Alberdi 2008-10-23	Plano Zk./Plano Nº		HC-81118	
Eskala/Escala		-	COOKING		- Zk. ord. du	
Plano hau ezin daiteke erabili, ez berrizatu, gure baimenik gabe.					- Zk. gaitik ord.	

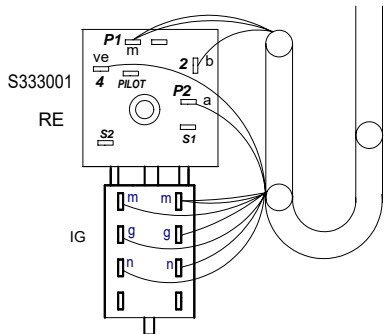
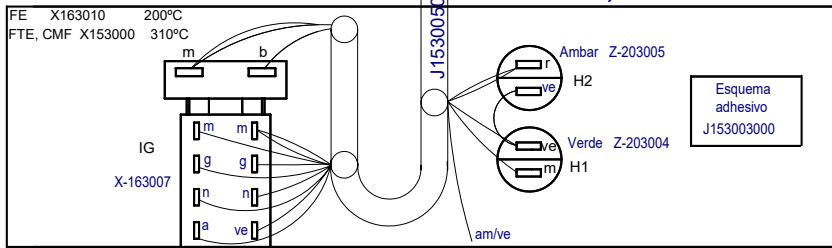
FTE 610 4x1,6KW J303001000
 FTE 605 3x1,6KW J303001000
 CMF 605 2x1,6KW J303001000
 FE 605 3x 2 KW J153016000
 CPE 605 2x3KW J153002000

NOTA: en el caso de 2 resistencias las conexiones de color marron quedan al aire



FE 610 x2

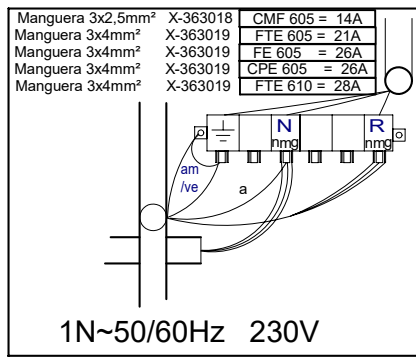
FTE 605 FTE 610,
 FE 605, CMF 605



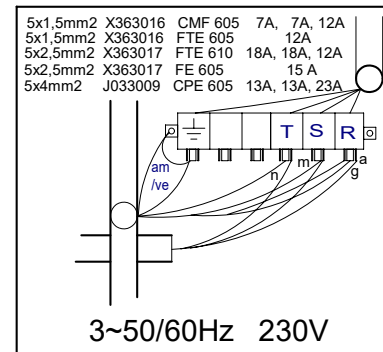
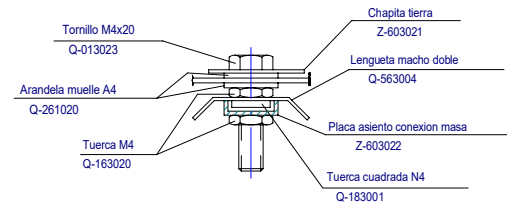
CPE 605

Esquema adhesivo J213001

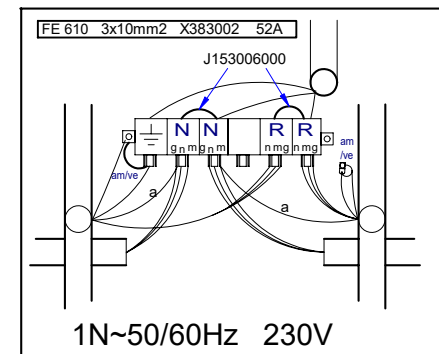
- Архангельск (8182)63-90-72
- Астана (7172)727-132
- Астрахань (8512)99-46-04
- Барнаул (3852)73-04-60
- Белгород (4722)40-23-64
- Брянск (4832)59-03-52
- Владивосток (423)249-28-31
- Волгоград (844)278-03-48
- Вологда (8172)26-41-59
- Воронеж (473)204-51-73
- Екатеринбург (343)384-55-89
- Иваново (4932)77-34-06



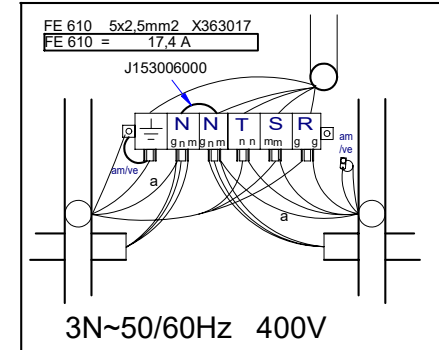
1N~50/60Hz 230V



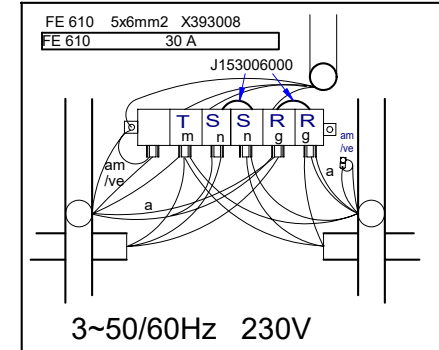
3~50/60Hz 230V



1N~50/60Hz 230V



3N~50/60Hz 400V



3~50/60Hz 230V

FE 610 Esquema adhesivo J153004000

FE 610

Киргизия (996)312-96-26-47

Россия (495)268-04-70

Казахстан (772)734-952-31

<https://fagor.nt-rt.ru/> || frg@nt-rt.ru

- Пермь (342)205-81-47
- Ростов-на-Дону (863)308-18-15
- Рязань (4912)46-61-64
- Томск (3822)98-41-53
- Тула (4872)74-02-29
- Санкт-Петербург (812)309-46-40
- Новосибирск (383)227-86-73
- Омск (3812)21-46-40
- Оренбург (3532)37-68-04
- Пенза (8412)22-31-16

- Сургут (3462)77-98-35
- Тверь (4822)63-31-35
- Тюмень (3452)66-21-18
- Ульяновск (8422)24-23-59
- Уфа (347)229-48-12
- Хабаровск (4212)92-98-04
- Челябинск (351)202-03-61
- Череповец (8202)49-02-64
- Ярославль (4852)69-52-93